

Mixer Tap Tre Alto 8468 000

Mixer Taps

Code: 8468 000



DETAILS

Material Brass

Texture Chromed

Rotating angle 120°

Strengthening plate ø52mm

Cartridge With ceramic discs

Mixer hole ø35mm

Max worktop thickness 40mm

Mixer type Single lever mixer tap with rotating barrel.

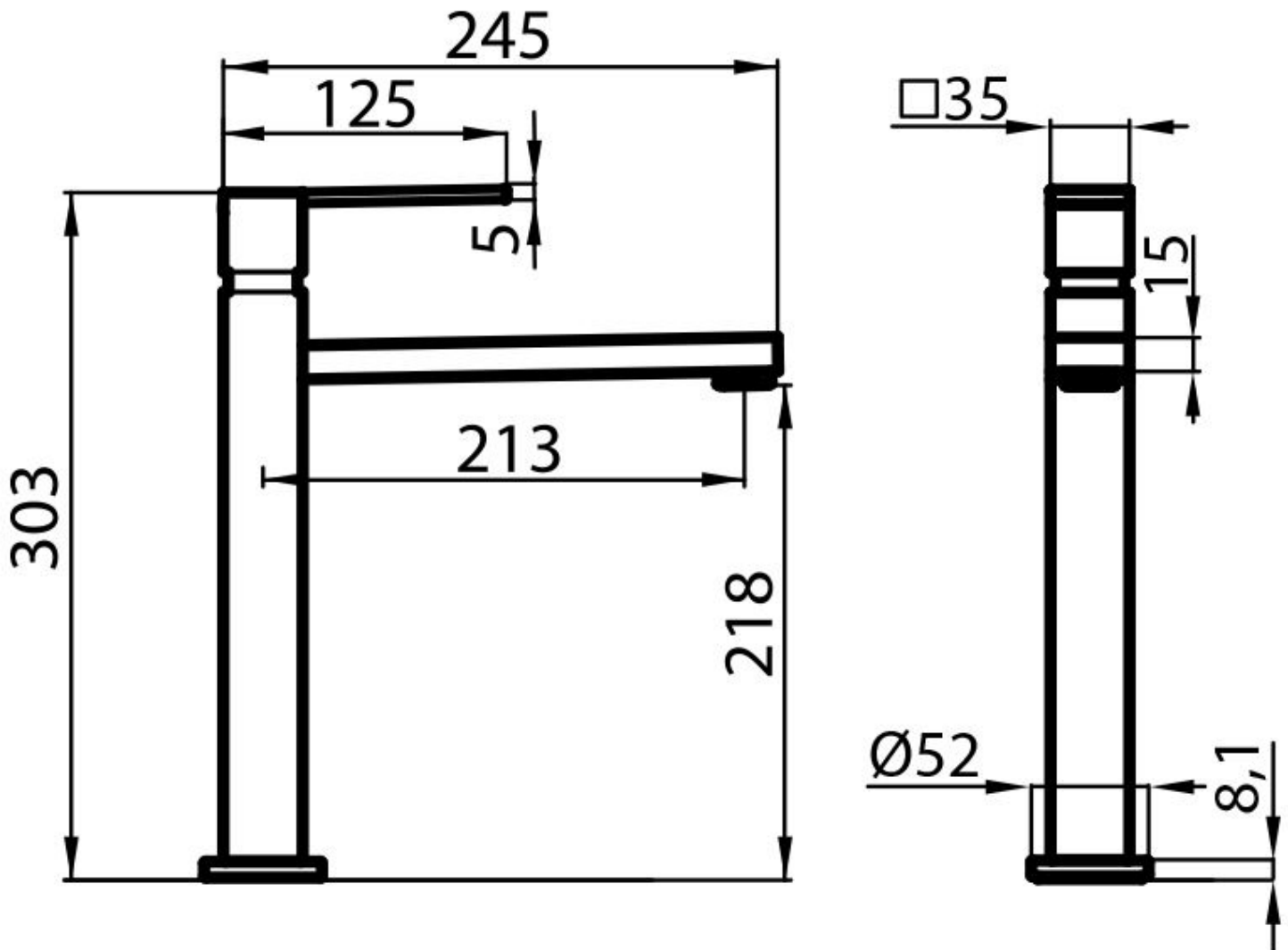
FEATURES

120 ° rotation

Strengthening plate

Foster's mixer taps are equipped with the strengthening plate that offers perfect stability on any sink.

TECHNICAL DATA



GALLERY

